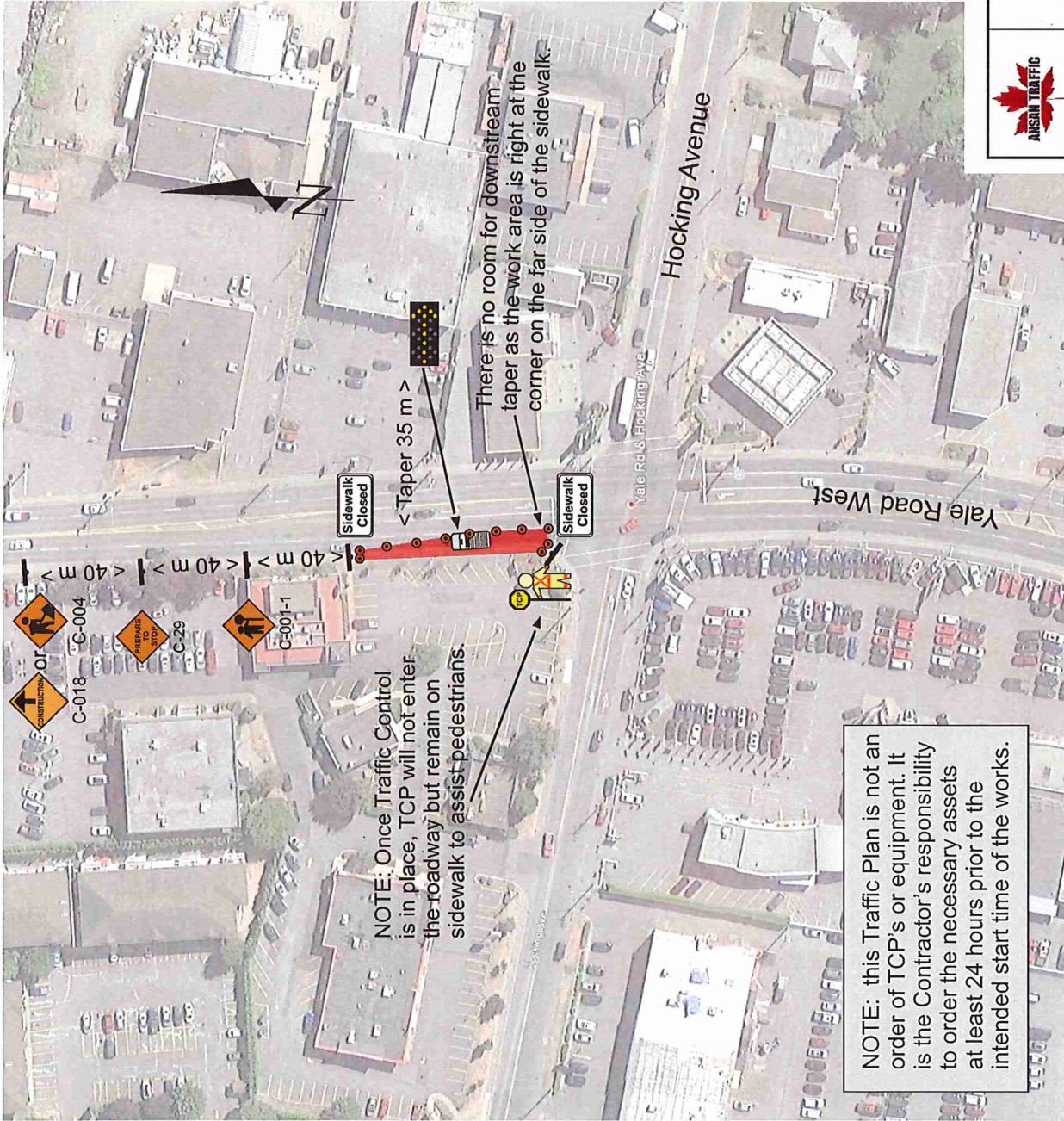


NOTES:

- 1. Description & Location:** AFL will be installing new electrical cabinets and conduit on Yale Road on the North West corner of the intersection with Hocking Avenue. The Southbound curb lane of Yale Road will be closed leaving the center lane to carry Southbound traffic. The Left Turn lane is unaffected.
- Traffic approaching the intersection from the East, West or South are unaffected by the closure.
- Traffic at this location is restricted to 50 km/h
- Traffic control will be provided by one TCP and one Lane Closure Vehicle. The TCP will not enter the roadway once the traffic control is set up and so advance warning signs are not necessary except for Southbound on Yale Road.
- No bus stops or cycling lanes are affected. The sidewalk will be closed as shown but there is ample alternate access for pedestrians and the cross walks are unaffected.
- Sign location and spacing will, as far as is possible, be in conformity with the requirements of the Traffic Management Manual for Work on Roadways (the Manual) (2015 Interim) as published by the MoTI. Changes to layout of signage may be made by the TCP in charge to accommodate traffic and local conditions on site at the time.



NOTE: this Traffic Plan is not an order of TCP's or equipment. It is the Contractor's responsibility to order the necessary assets at least 24 hours prior to the intended start time of the works.

LEGEND

- TRAFFIC CONTROL PERSON
- WORK AREA
- TRAFFIC CONE TYPE 'D'
- TRAFFIC SIGN LOCATION
- LANE CLOSURE TRUCK
- TRUCK MOUNTED FAB
- TRAFFIC FLOW
- OVERHEAD CABLE



Ansan Industries Ltd.
2600 Viking Way, Richmond,
British Columbia V6V 1N2

No: 17-1097-05	Customer: AFL Construction Services
Date: 4 April 2017	Contact: Kelly Buchanan Tel: 250-485-7330
Title: Cabinet and Conduit Installation - CLWK 4041A-2610043 Yale Road at Hocking Road Chilliwack, British Columbia	
Traffic Tech: Flynn Marr	Dwg By: R. Flynn Marr B.Sc.(Eng)
File: Plan 17-1097-05.cdr	

This Traffic Plan has been prepared by Ansan Industries Ltd. (Ansan) based, in part, on information provided by third parties. Every effort has been made to ensure that the plan conforms to the requirements of the Motor Vehicle Act [RSBC 1966] Chapter 318 and Regulations and to the BC Traffic Control Manual. Ansan assumes no responsibility for the uses to which this plan is put by third parties not directly under the supervision of Ansan or its agents.